

KHDA STRATEGIC PLAN FOUNDATIONAL CAPABILITIES WORKGROUP

MAY 8, 2014

Agenda

1. Welcome and Introductions
2. Foundational Capabilities
3. Financing
4. Current Laws/Statutes
5. Aim Statement
6. Next steps/assignments

IOM RECOMMENDATIONS FOR A MINIMUM PACKAGE

- All levels of government should endorse the need for a **minimum package of public health services** that includes foundational capabilities and an array of basic programs that no health department should be without.
- Stakeholder process to determine elements of the Minimum Package, made up of foundational capabilities and basic programs

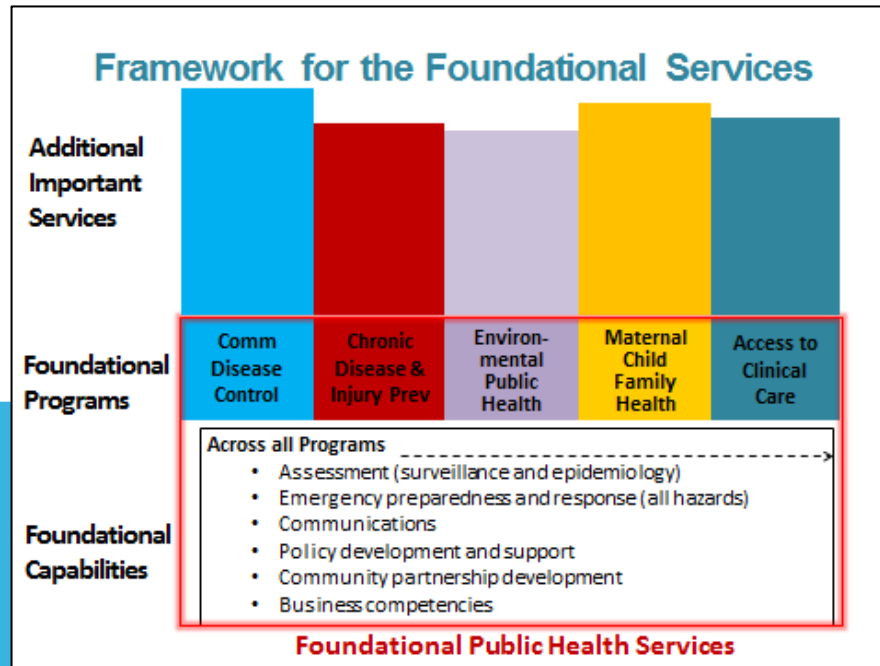
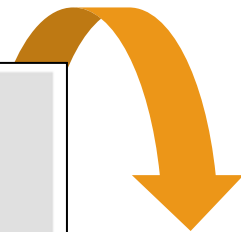
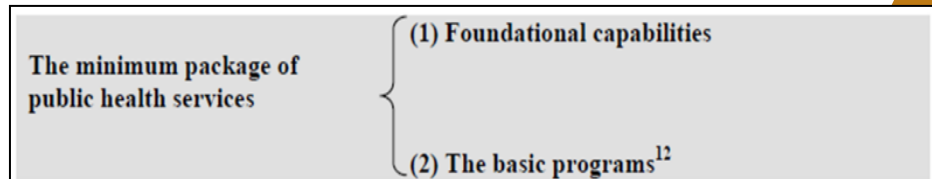


The minimum package of public health services

(1) Foundational capabilities

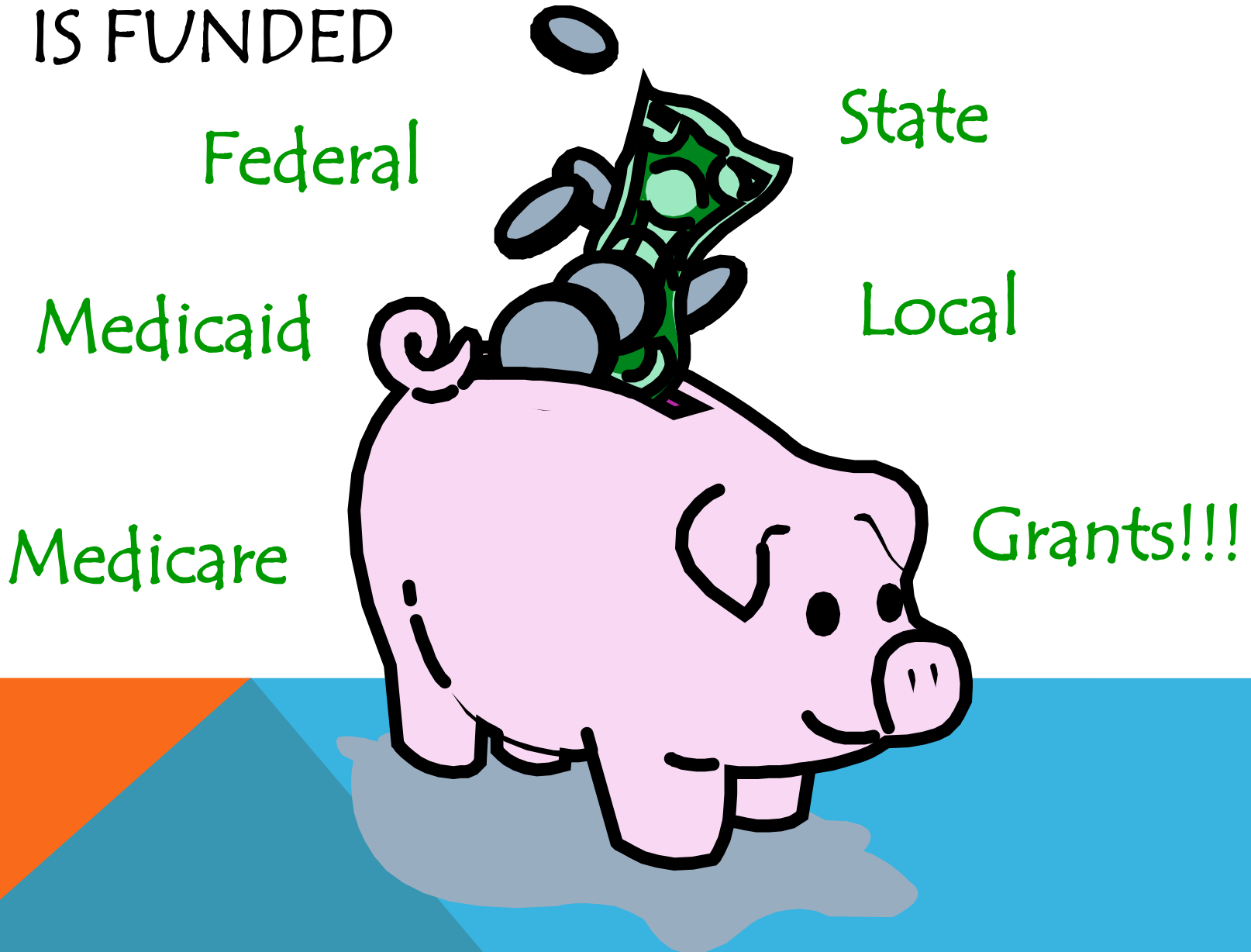
(2) The basic programs¹²

WASHINGTON STATE DAVID FLEMING





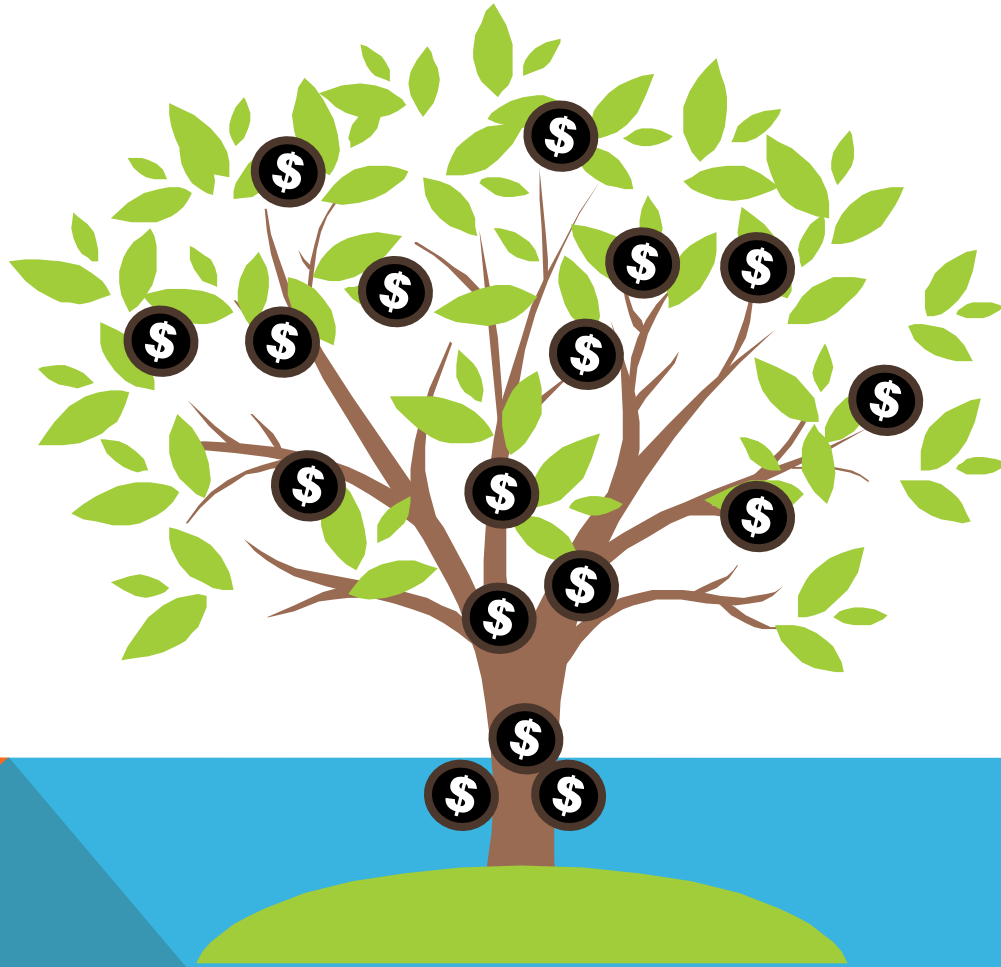
HOW PUBLIC HEALTH IN KENTUCKY IS FUNDED





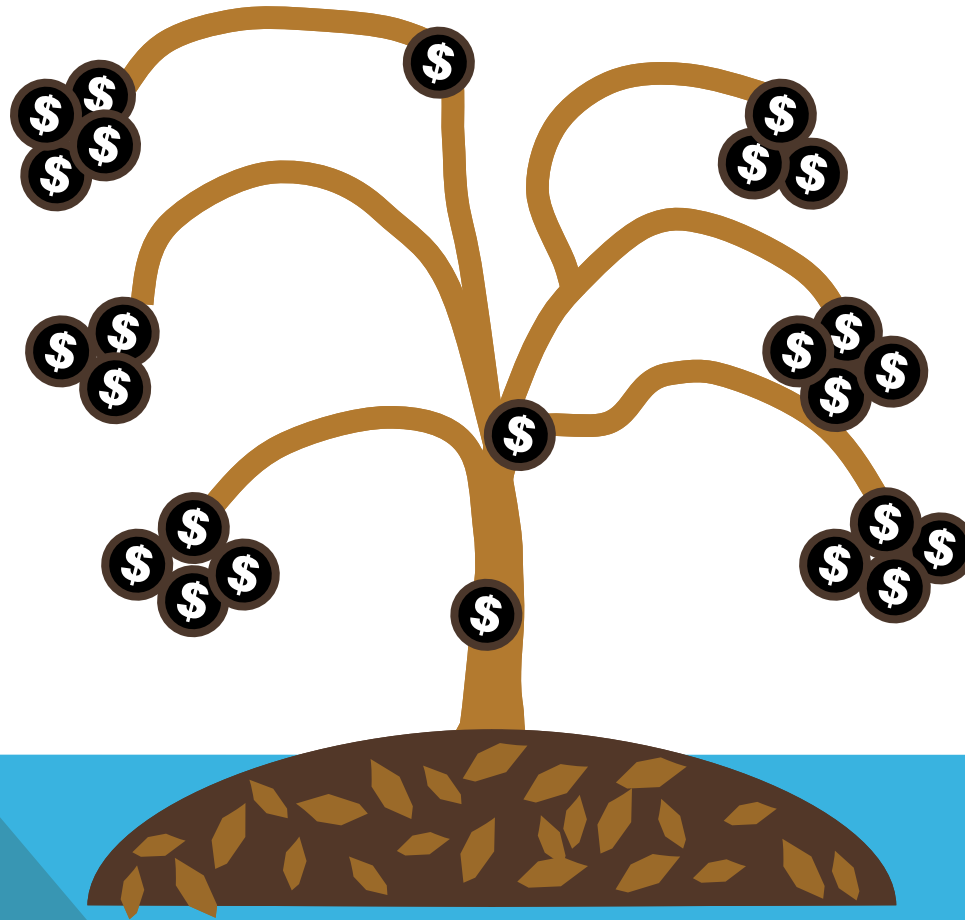
How to get the Most Bang for our Buck

Ideal Public Health Department



DAVID FLEMING, WASHINGTON STATE

Actual Public Health Department



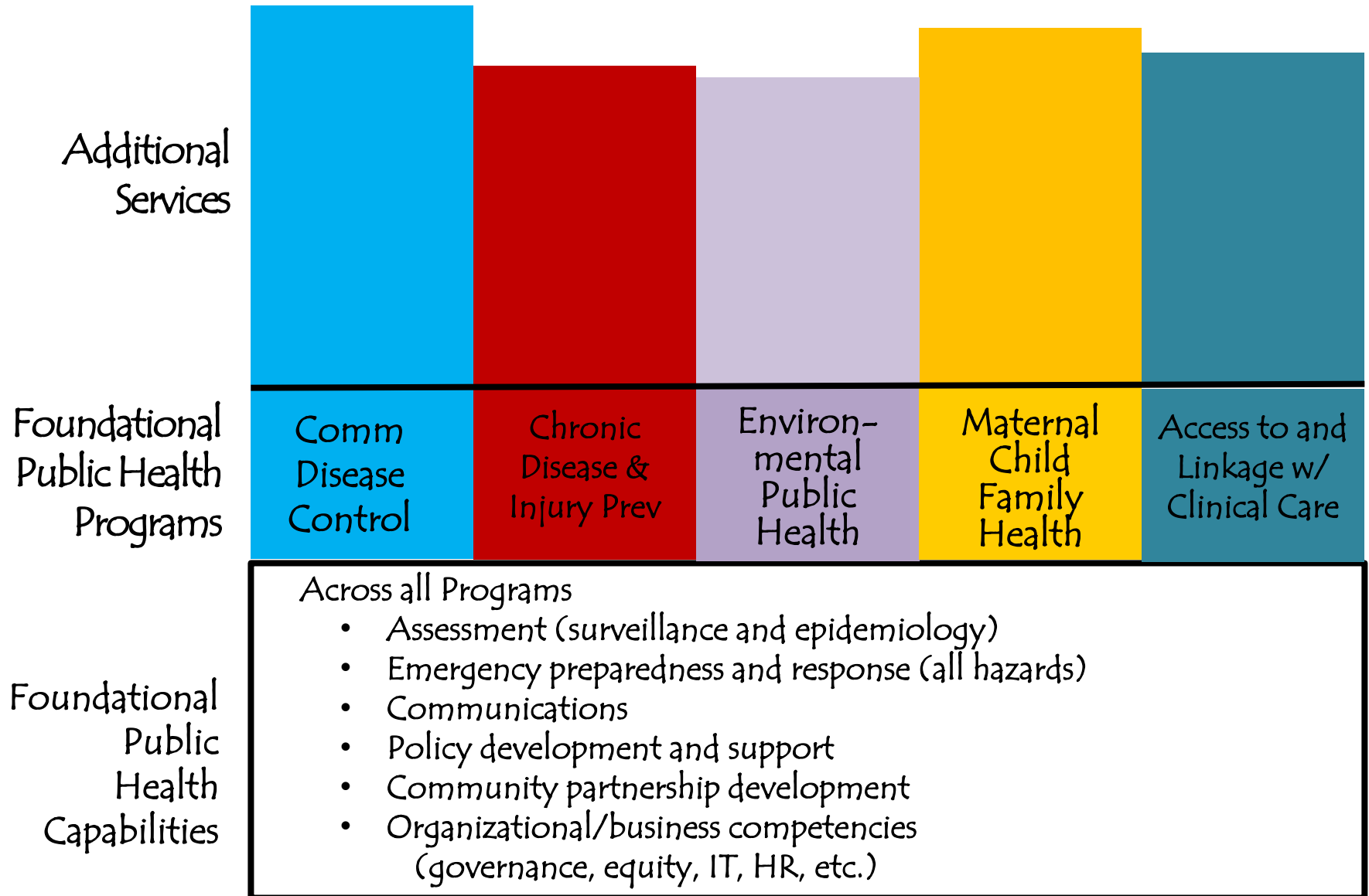
DAVID FLEMING, WASHINGTON STATE

Current State of the Public's Health in Kentucky

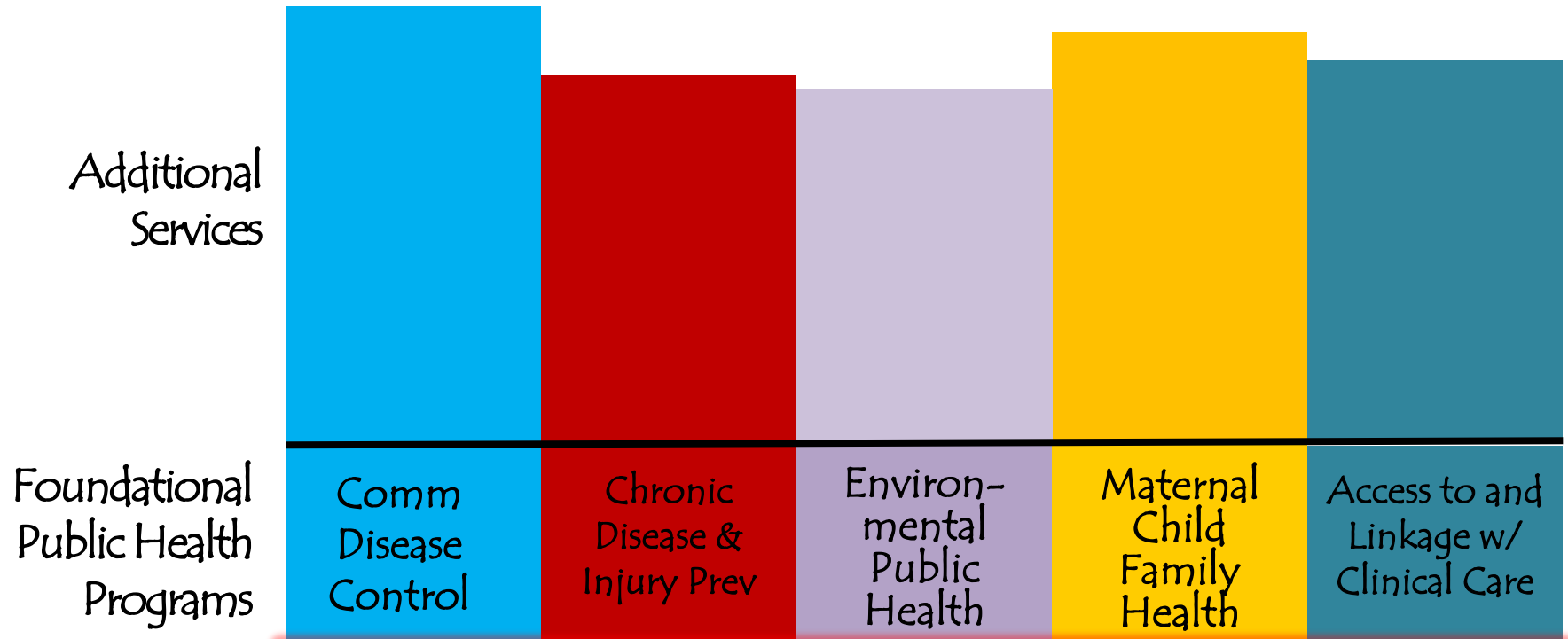
- Decentralized local public health system;
- Chronic under-funding of Public Health;
- Acute state and local budget reductions;
- Vulnerability of a pool of state dollars for core support of local Public Health services;
- Proposed elimination of these resources in legislative session after session.

- 1) Change will not happen immediately or without pain..
- 2) What do we need to be doing at a minimum?
- 3) Be specific enough on what needs to be in place to determine its cost.
- 4) Realize that the current structure may not survive.

Framework



Framework



Across all Programs

- Assessment (surveillance and epidemiology)
- Emergency preparedness and response (all hazards)
- Communications
- Policy development and support
- Community partnership development
- Organizational/business competencies (governance, equity, IT, HR, etc.)

Foundational
Public
Health
Capabilities

Foundational Capabilities – Assessment

- Ability to collect, access, and analyze data from 8 specific information sources, including:
 1. Census data,
 2. Vital statistics,
 3. Notifiable condition registry,
 4. Hospital discharge administrative data set,
 5. Behavioral risk factor surveillance survey,
 6. Healthy youth survey,
 7. Key community health indicators,
 8. A public health agency chart of accounts.
- Ability to prioritize and respond to data requests and to translate data into basic information and reports that are valid, statistically accurate, and readable.
- Ability to conduct a basic community health assessment and identify health priorities arising from that assessment.
- Ability to access 24/7 laboratory resources capable of providing rapid detection

Foundational Capabilities– All Hazards Preparedness/Response

- Ability and capacity to develop, exercise, and maintain preparedness and response strategies and plans, in accordance with established guidelines, to address natural or other disasters and emergencies, including special protection of vulnerable populations
- Ability and capacity to lead the Emergency Support Function 8—Public Health and Medical for the county, region, jurisdiction, and state
- Ability to activate the emergency response personnel and communications systems in the event of a public health crisis; coordinate with federal, state, and local emergency managers and other first responders; and operate within, and as necessary lead, the incident management system
- Ability to maintain and execute a continuity of operations plan that includes a plan to access financial resources to execute an emergency and recovery response
- Ability to establish and promote basic, ongoing community readiness, resilience, and preparedness by enabling the public to take necessary action before, during, or after a disaster
- Ability to issue and enforce emergency health orders
- Ability to be notified of and respond to events on a 24/7 basis
- Ability to function as a Laboratory Response Network (LRN) Reference lab for biological agents and as an LRN chemical lab at a level designated by the CDC

Foundational Capabilities – Communications

- Ability to maintain ongoing relations with local and statewide media including the ability to write a press release, conduct a press conference, and use electronic communication tools to interact with the media
- Ability to write and implement a routine communication plan that articulates the health department's mission, value, role and responsibilities in its community, and support department and community leadership in communicating these messages
- Ability to develop and implement a risk communication strategy, in accordance with PHAB standards, to increase visibility of a specific public health issue and communicate risk—including the ability to provide info on health risks and associated behaviors
- Ability to transmit and receive routine communications to and from the public in an appropriate, timely, and accurate manner, on a 24/7 basis
- Ability to develop and implement a proactive health education/health prevention strategy that disseminates timely and accurate information to the public in culturally and linguistically appropriate formats for the various communities serviced (including electronic communication tools)

Foundational Capabilities – Policy Development/Support

- Ability to serve as a primary and expert resource for establishing, maintaining, and developing basic public health policy recommendations that are evidence-based, grounded in law, and legally defensible (includes researching, analyzing, costing out, and articulating the impact of such policies and rules) as well as the ability to organize support for these policies and rules and place them before an entity with the legal authority to adopt them
- Ability to effectively inform and influence policies being considered by other governmental and non-governmental agencies within your jurisdiction that can improve the physical, environmental, social, and economic conditions affecting health but are beyond the immediate scope or authority of the governmental public health department

Foundational Capabilities – Community Partnership Development

- Ability to create, convene, and sustain strategic, non-program specific relationships with key health –related organizations; community groups or organizations representing populations experiencing health disparities or inequities; private businesses and health care organizations; and relevant federal, tribal, state, and local government agencies and non-elected officials
- Ability to create, convene, and support strategic partnerships
- Ability to maintain trust with and engage community residents at the grassroots level
- Ability to strategically select and articulate governmental public health roles in programmatic and policy activities and coordinate with these partners
- Ability to convene across governmental agencies to promote health, prevent disease, and protect residents of the health department's geopolitical jurisdiction
- Ability to engage members of the community in a CHIP that draws from a CHA and establishes a plan for addressing priorities. The CHIP can serve as the basis for partnership development and coordination of effort and resources

Foundational Capabilities – Organizational Competencies

- **Leadership and Governance**
 - Ability to lead internal and external stakeholders to consensus, with movement to action, and to serve as the public face of governmental public health in the department's jurisdiction
 - Ability to engage in health policy, development, discussion and adoption with local, state, and national policy makers
 - Define a strategic direction of public health initiatives
 - Ability to engage with the appropriate governing entity about the department's public health legal authorities and what new laws/policies are needed
- **Health Equity**
 - Ability to strategically coordinate health equity programming through a high level, strategic vision and/or subject matter expertise which can lead and act as a resource to support such work across the department

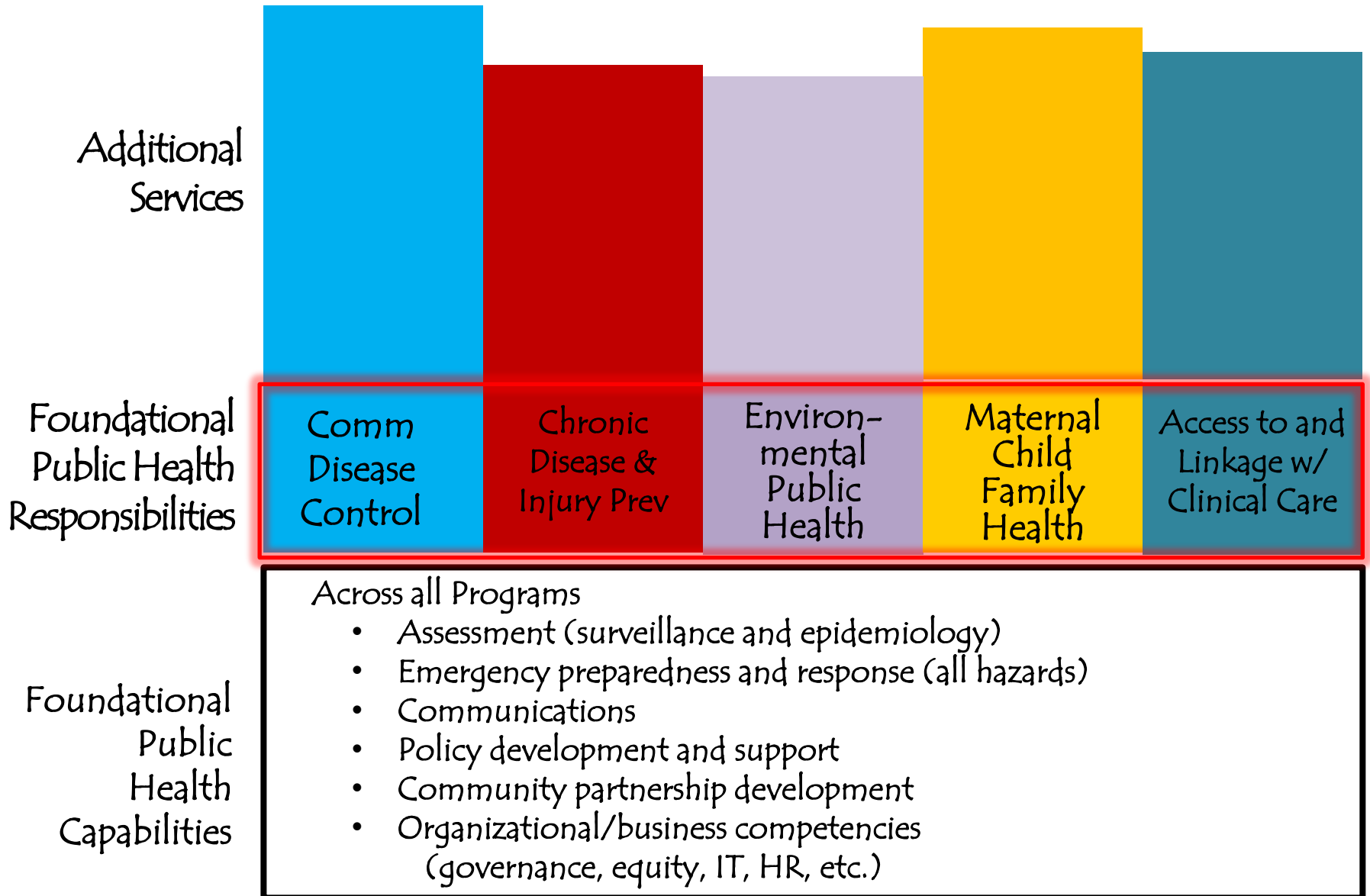
Foundational Capabilities – Organizational Competencies

- **Accountability, Performance Management, and Quality Improvement**
 - Ability to perform according to accepted business standards and to be accountable in accordance with applicable relevant federal, state, and local laws and policies
 - Assure compliance with national and PHAB standards
 - Ability to maintain a performance management system to monitor achievement of organizational objectives
 - Ability to identify and use evidence based and/or promising practices when implementing new or revised processes, programs and/or interventions
 - Ability to maintain an organization-wide culture of quality improvement using nationally recognized framework quality improvement tools and methods
- **Information Technology Services (including privacy and security)**
 - Ability to maintain and procure the hardware and software needed to access electronic health information
 - Support the department's operations and analysis of health data
 - Ability to support, use, and maintain communication technologies needed to interact with the public
 - Ability to have the proper systems in place to keep health and human resources data confidential.

Foundational Capabilities – Organizational Competencies

- **Human Resources Services**
 - Ability to develop and maintain a competent workforce, including recruitment, retention, and succession planning; training; and performance review and accountability
- **Financial Management, Contract, and Procurement Services (including facilities and operations)**
 - Ability to establish a budgeting, auditing, billing, and financial system and chart of expense and revenue accounts in compliance with federal, state, and local standards and policies
 - Ability to secure grants or other funding (governmental and not)
 - Demonstrate compliance with an audit required for the sources of funding utilized
 - Ability to procure, maintain, and manage safe facilities and efficient operations
- **Legal Services and Analysis**
 - Ability to access and appropriately use legal services in planning, implementing, and enforcing public health initiatives, including relevant administrative rules and due process

Framework



COMMON ELEMENTS OF FOUNDATIONAL PROGRAMS

Provide timely, locally relevant and accurate [program] information to the community, including strategies to improve [program] outcomes.

Identify local [program] community assets, develop and implement prioritized plans, and advocate and seek funding for high priority policy initiatives.

Coordinate and integrate other categorically-funded [programs].



Provide timely, locally relevant and accurate CD information to the community ...

Identify local community CD assets, develop and prioritize plans

Coordinate and integrate other categorically-funded programs....

Receive laboratory reports and other relevant data

Conduct disease investigations, including contact tracing and notification

Recognize, identify, and respond to communicable disease outbreaks for notifiable conditions in accordance with local, national and state mandates and guidelines

Support the recognition of outbreaks and other events of public health significance by assuring capacity for the identification and characterization of the causative agents of disease and their origin, including those that are rare and unusual, at the appropriate level

FOUNDATIONAL AREAS – COMMUNICABLE DISEASE CONTROL

Provide timely, locally relevant and accurate CD and injury information to the community ...

Identify local community partners, assets, develop and prioritize plans

Coordinate and integrate other categorically-funded programs....

Reduce statewide and community rates of tobacco use through a program that conforms to standards set by state or local laws and CDC (including activities to reduce youth initiation, increase cessation, reduce secondhand smoke exposure and exposure to harmful substances

Work with statewide and community partners to increase rates of health eating and active living through a prioritized approach focusing on best and emerging practices aligned with national, state, and local guidelines

FOUNDATIONAL AREAS - CHRONIC DISEASE AND INJURY PREVENTION

Provide timely, locally relevant and accurate information to the community about environmental issues and health impacts ...

Identify local community partners and assets, develop and prioritize plans

Coordinate and integrate other categorically-funded programs....

Conduct mandated environmental public health lab testing, inspections, and oversight to protect food, recreation sites, and drinking water; manage liquid and solid waste streams safely; and identify other public health hazards related to environmental factors in accordance with federal, state, and local laws and regulations

Protect workers and the public from chemical and radiation hazards in accordance with federal state, and local laws and regulations

Participate in broad land use planning and sustainable development to encourage decisions that promote positive health outcomes and resilient communities

FOUNDATIONAL AREAS - ENVIRONMENTAL PUBLIC HEALTH

Provide timely, locally relevant and accurate maternal child health trends to the community ...

Identify local community partners and health disparities, and develop and prioritize plans

Coordinate and integrate other categorically-funded programs....

Identify, disseminate and promote emerging and evidence-based information about early interventions in the prenatal and early childhood period that promote lifelong health and positive social-emotional development

Assure newborn screening as mandated by a state or local governing body including wraparound services, reporting back, following up, and service engagement activities

FOUNDATIONAL AREAS – MATERNAL/CHILD/FAMILY HEALTH

Provide timely, locally relevant and accurate linkage to care information (including behavioral health) to the community ...

Identify local community facilities and resources, develop and prioritize plans

Coordinate and integrate other categorically-funded programs....

Inspect and license healthcare facilities and license, monitor, and discipline healthcare providers, where applicable

In concert with national and statewide groups and local providers of health care, identify healthcare partners and competencies

FOUNDATIONAL AREAS - ACCESS TO/LINKAGE WITH CLINICAL HEALTH CARE

Framework

Additional
Services

Foundational
Programs

Foundational
Capabilities

Comm
Disease
Control

Chronic
Disease &
Injury Prev

Environ-
mental
Public
Health

Maternal
Child
Family
Health

Access to
Clinical
Care

Across all Programs

- Assessment (surveillance and epidemiology)
- Emergency preparedness and response (all hazards)
- Communications
- Policy development and support
- Community partnership development
- Business competencies

Framework for the Foundational Services

**Additional
Important
Services**

**Comm
Disease
Control**

**Foundational
Programs**

**Chronic
Disease &
Injury Prev**

**Environ-
mental
Public
Health**

**Maternal
Child
Family
Health**

**Access to
Clinical
Care**

Across all Programs ----->

- Assessment (surveillance and epidemiology)
- Emergency preparedness and response (all hazards)
- Communications
- Policy development and support
- Community partnership development
- Business competencies

**Foundational
Capabilities**

Foundational Public Health Services

ADDITIONAL SERVICES

Communicable Disease Control

Federal and state HIV prevention and clinical services in accordance with state and federal regulations for these programs (e.g. Ryan White).

HIV/STD testing and treatment to vulnerable populations.

Treatment of latent tuberculosis infection.

Partner notification services for chlamydia infections.

S Strategic/Specific

M Measurable

A ~~Attainable~~ - Ambitious

R Realistic

T Timed

Craft a clear concise, precise AIM Statement using your SMART Goals.

SMART

Aim
Statement

S

PECIFIC

Define

Foundational Capabilities
and Programs

and Cost out
identify GAP

M

EASURABLE

WHITE PAPER

A

CTIONABLE

INFORM
POLICY OPTIONS

(OPERATIONAL
FINANCE)

R

EALISTIC

REPLICATE
EXISTING WORK


T

IMELY

DEC. 31
2014

AIM Statement:

“Utilizing existing tools, KHDA will produce a document by December 31, 2014, to identify and define the foundational capabilities and programs, their estimated cost, current expenditures, and the difference to inform future operational and financial policy for local health departments in Kentucky.”



Next Steps (assignments)

- Glen shares instruments from UK
- Alison A. (crosswalk ~~finances~~) statutes w/ framework)
- Kraig / Georgia
 - get detailed / specified definitions for each of the foundational capabilities (natl level)
- all members of the committee do their homework in looking at foundational capabilities and how it is defined, what is currently operational in KY, what we would like to see happen
- 2 different meetings:
 - ① capabilities
 - ② programs